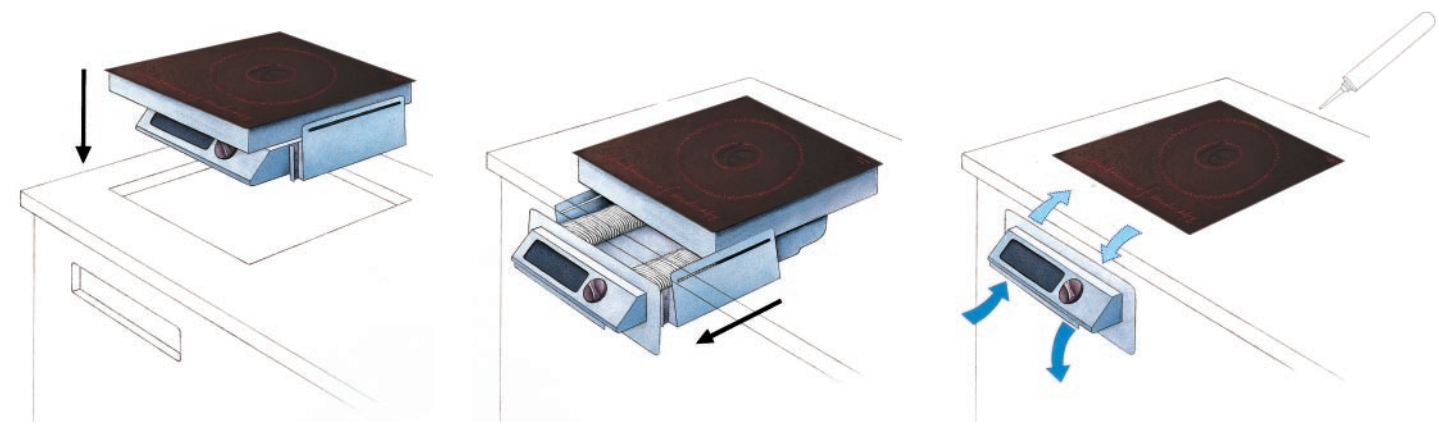


Induced Energy Model CS3000DF Flush Mounted Drop In Induction Hob (for REBATED Aperture)

Installation Instructions



Your induction hob features a unique “drawer” concept.
This provides ease of installation and a fail-safe
front-to-front ventilation system.

For a successful installation, please follow these simple
instructions carefully.

Manufactured and supported in the UK

Induced Energy Limited

Westminster Road, Brackley, Northants NN13 7EB

Tel: 01280 875400 Fax: 01280 705270

email: sales@inducedenergy.com website: www.inducedenergy.com

It has to be induction – it has to be Induced Energy



It has to be induction – it has to be Induced Energy



Pre-Installation Checklist

1. PARTS CHECK LIST

Carefully unpack unit and check the following parts are complete:-

Item	Quantity
Drop-in induction hob including fixed glass	1
Bezel for fitting around the control panel	1
Screws 4mm	4
Dome-headed bolts	2
Tube of black mastic	1
Masking tape roll	1
Paper towel roll	1
Acrylic template	1

2. SAFETY CHECK

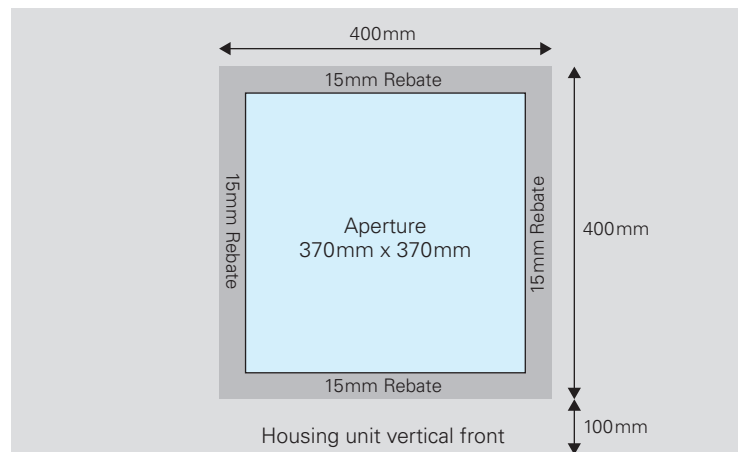
If the hob casing, hob glass top or hob control panel are damaged do not proceed. Contact your supplier.

3. CHECK ELECTRICITY SUPPLY

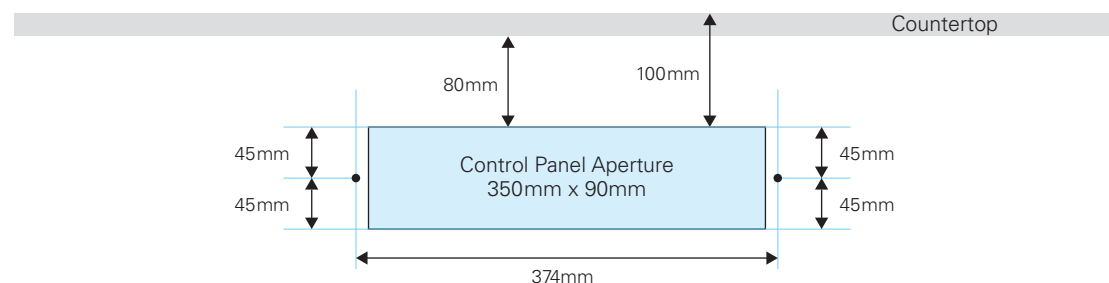
Ensure that there is a 13-amp electrical socket available within the housing unit and that it is operational. It is preferable, although not essential, that your induction unit is NOT hard-wired into the electrical supply.

Cutting the aperture for the hob and control panel

A. Cut a rebated aperture in the counter top where the hob is to be positioned. The actual aperture must be 370mm square. The rebate must provide a 15mm lip on which the hob will rest. The rebate should be 9mm deep from the top of the counter surface. See drawing below:



B. Place the acrylic template against the vertical surface of the housing unit, where the control panel is to be situated. The template should be centred on the main counter aperture. If there is no counter top overhang, position the template so that the arrow against "No Countertop Overhang" is in line with the top surface of the counter. If there is a counter overhang, position the template so the arrow against "Countertop Overhang" is pushed up against the overhang. Mark the aperture to be cut and the two drill holes. Cut the non-rebated aperture and drill 2 x 6mm holes. Discard the template.



Installation

- Note the bracket on each side of the control panel. Each bracket is held by two fixing screws. As supplied, these are positioned for installation where the front panel of the housing unit is up to 3mm thick. If the front panel of the housing unit is more than 3mm thick, unscrew the two brackets and reposition them in the pre-drilled holes situated further from the front of the unit.
- Locate the black transport locking screw on the right-hand side of the hob case, remove it and discard.
- BEFORE PROCEEDING, ENSURE THAT THE ELECTRICAL POWER SUPPLY TO THE UNIT IS SWITCHED OFF.**
- Make sure that the control panel is not extended and using both hands, carefully pick up the hob by the flange, together with the mains cable. Feed the mains cable through the counter-top aperture, then lower the hob unit into the aperture. The hob will be supported by the rebate and should be positioned centrally within the aperture.
- The front panel is attached to the hob using a drawer mechanism. Put your hands through the control panel cut-out and carefully pull the control panel towards you and through the front aperture. Carefully extend it until it butts up against the front of the counter.
- Place the frame over the display panel so that it squarely meets up with the front of the housing unit. Insert the two dome-headed screws through the frame, through the housing unit front and push the control panel back into the aperture. Secure the display panel frame fixing the 2 x dome-headed bolts into the pre-drilled holes and screwing into the brackets on the side of the unit.
- Plug in and switch on the electrical supply and test the unit as follows:-
 - There will be a brief lamp test when all of the display messages will illuminate. Turn the power setting to 99
 - Check that the "No Pan" warning indicator is lit.
 - Add 1 litre of water to a pan and place in the centre of the hob
 - The "No Pan" warning should be extinguished. If it is not, the pan you are using is not suitable. Induction requires a pan made of magnetic material. If in doubt check bottom of pan with a magnet. CAUTION – the contents of the pan will heat very quickly at this setting.
 - As the water heats, check that there is an airflow from below the bottom right hand side of the control panel.
 - Turn the knob to the off position.
- On successful completion of this test, **disconnect the unit from the power supply.**
- Using the masking tape to mask around the edges of the glass top and also around the edges of the rebate on the countertop. Ensure that the unit has been positioned centrally to enable you to apply an even bead of mastic all around, i.e between the countertop and the glass. Smooth off with a wet finger, ensuring that an effective seal has been applied all round the glass top. Remove and discard the masking tape.
- LEAVE FOR FOUR HOURS FOR THE MASTIC SEALER TO CURE BEFORE OPERATION,** then reconnect to the electrical supply. Normal operation can then begin.
- If you are unsure of the installation instructions above, please call us on 01280 875400 for further assistance.

It has to be induction – it has to be Induced Energy

